



Model 1111/1112



Doc: CH-1111/02

Nov 2007

Air operated 2 way brass ball valve with kit

Full bore 2 way nickel plated brass ball valve, designed for automation with integrally cast ISO5211 actuator mounting platform, fitted via stainless steel mounting kit with CH-air 'A' type pneumatic actuator. Supplied assembled and dry bench function tested. Minimum of 80 psi (5.5 bar) air supply pressure to the actuator is required.

1111 With double acting actuator

1112 With spring return actuator

Size range from 1/2" to 2". Valves are WRAS approved for use on potable water.

Applications:

Water, oil and most non-corrosive media, subject to compatibility with wetted parts in contact with media. Actuators sized on a maximum differential pressure of 10 bar wet service, if the intended duty is above this differential, or dry (air or gas) call to check actuator sizing as a larger output actuator may be required.

Maximum working temperature of assembly is +130C. If the intended duty is at a higher temperature than this, select a stainless steel valve - contact us for information.

Valve Specifications:

Body	Nickel plated brass
Ball	Nickel plated brass
Seats	PTFE
Pressure rating	40 bar
Valve temp limits	-20 to +150°C
Actuator temp limits	-20 to + 70°C

Accessories:

Solenoid control:

This provides electrical control of the valve. The air is constantly supplied to the solenoid which in turn controls the air to and from the actuator. The solenoid direct mounts to the actuator using the actuator's Namur connection.

Position Confirmation:

Remote end of travel confirmation can be provided by adding a top mounted limit switch box. A variety of switch options and housings are available
See our LSB range for details.

Position control:

The standard on/ off function can be converted to modulating function, using either a 3-15psi or 4-20mA control signal, by adding a pneumatic or electro-pneumatic positioner.
See our YT range for details.



Quick guide to the CH-air A Type actuator standard features :

Robust rack and pinion construction

High accuracy machining of components

ATEX Ex II 2 GD approved for use in hazardous areas

CE Approved

Guaranteed for 1,000,000 cycles

Balanced air & spring strokes in spring return version

Safe to dismantle for routine maintenance

Compliant with all actuator standards

Accessories are easy to mount

Hard anodised aluminium body

*ENP coated option
(Extra cost)*

*Teflon® coated option
(Extra cost)*

*Stainless steel version
(Extra cost)*



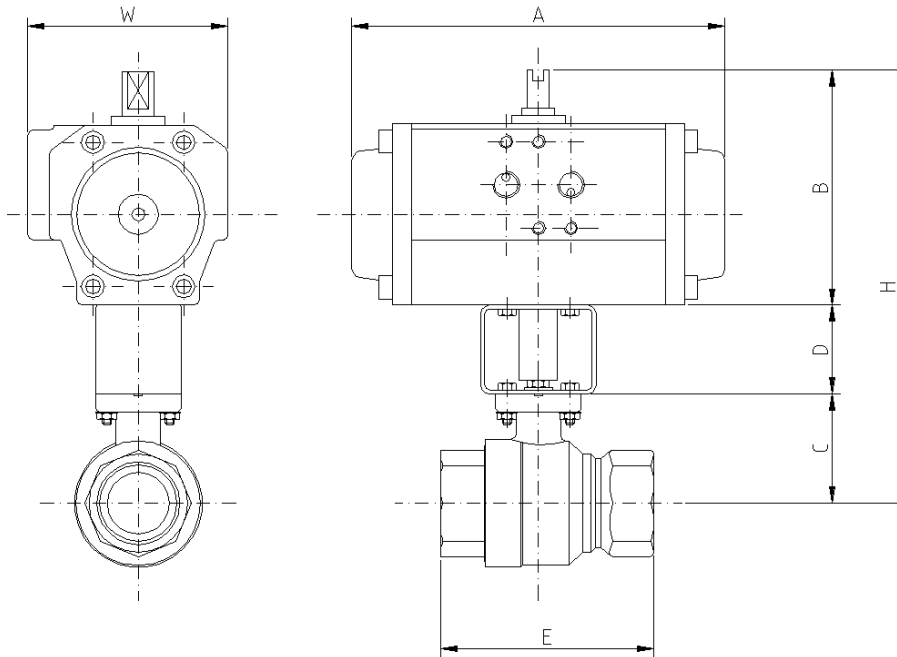
Model 1111/1112



Doc: CH-1111/02

Nov 2007

Air operated 2 way brass ball valve with kit - Dimensions (to nearest mm)



Double Acting

	Model	A	B	C	D	E	H	W	Kilos	Kv
1/2"	CH032	117	65	31	50	59	146	48	1.2	16.3
3/4"	CH032	117	65	37	50	69	152	48	1.3	29.5
1"	CH032	117	65	41	50	83	156	48	1.6	43.0
1 1/4"	CH032	117	65	47	50	94	162	48	1.9	89.0
1 1/2"	CH050	138	87	58	50	102	205	75	2.9	230.0
2"	CH063	156	103	66	50	124	219	86	4.2	265.0

Spring Return

1/2"	CH042SR	160	77	31	50	59	158	61	1.7	16.3
3/4"	CH042SR	160	77	37	50	69	164	61	1.8	29.5
1"	CH042SR	160	77	41	50	83	168	61	2.1	43.0
1 1/4"	CH042SR	160	77	47	50	94	174	61	2.4	59.0
1 1/2"	CH063SR	156	103	58	50	102	213	86	3.7	230.0
2"	CH063SR	156	103	66	50	124	219	86	4.4	265.0

Kv is in m³/hr, based on water at ambient temperature with a 1 bar pressure drop across the valve

Subject to alteration without notice. Uncontrolled copy, not subject to automatic updates



Valve Data Sheet



Doc: BBV450/02

Nov 2006

Full bore nickel plated brass direct mount ball valve



Specifications:

Construction	2 Pce Full bore direct mount ball valve
Size Range (Full)	1/2" to 2" BSP
Pressure Rating	40 Bar
Valve Body Material	OT58 Nickel plated brass
Trim Material	OT58 Chrome plated brass
Seat Material	PTFE
Seal Material (Options)	Flouride & NBR rubber
Inspection & Test	Manufacturer's own
Standards	ISO521 I, DIN3337
Certification	Certificate of Conformity
Temperature Range	-20 to +150C

Approvals:

Approved ?



PED/97/23/EC



ATEX 94/9/EC
II 2 GD



API 607 4th Ed'n /
BS6755 Pt 2



TA-Luft



Dimensions:

SIZE DN	Ø	A	B	C	F	H	S	Nm
1/2"	15	7	9	F03	17	31	59	1.0
3/4"	20	8	9	F03	18	37	69	1.2
1"	25	8	9	F03	22	41	83	1.5
1 1/4"	32	8	9	F03	24	46.5	94	2.0
1 1/2"	40	14.5	14	F05	24	58	102	10.0
2"	50	14.5	14	F05	28	65.5	124	14.0

