



Model **J3-1110E**



Doc: J3/1110E/03

May 2010

Electrically operated 2 way economy brass ball valve

Full bore 2 way economy nickel plated brass ball valve, designed for automation with integrally cast ISO5211 actuator mounting platform fitted with **J3** electric actuator via a kit. Supplied assembled and dry bench function tested. Size range from 1/4" to 3".

Type	Function
J3-1113E	Standard power to open - power to close - Stays put on mains failure
J3-1114E	Failsafe BSR - Battery Spring Return - Fails to safe position using an internal battery
J3-1115E	Modulating DPS - Digital Positioning System - Controlled by a 4-20mA or 0-10V signal



Applications:

Water, oil and most non-corrosive media, subject to compatibility with wetted parts in contact with media. Actuators sized on a maximum differential pressure of 10 bar wet service, if the intended duty is above this differential, or dry (air or gas) call to check actuator sizing as a larger output actuator may be required. NOT suitable for use on steam.

Maximum working temperature of assembly is +120C (see below). If the intended duty is at a lower temperature than +70C, select model **J3-1103E** which has direct mounted actuator and offers a more compact and cost effective assembly.

Valve Specifications:

Body	Nickel plated brass
Ball	Chromed brass
Seats	PTFE
Pressure rating	UT1 1" = 40 Bar 1 1/4"-2 1/2" = 30 Bar 3" = 25 Bar
Valve temp limits	-20C to + 95C (PN40) -20C to +120C (PN16)
Actuator temp limits	-20 to + 70°C



J3 Actuator status light basic functions:

Constantly lit LED	The LED flashes with 2 blinks	The LED flashes on/ off
If the actuator is operating correctly with no faults, the LED shows a constantly lit light.	If the actuator has been left in 'manual' mode, the actuator's motor runs but doesn't drive the output shaft. After a pre-set time, the actuator knows that as the torque limiter has not activated and that the motor is running, it is in manual.	When the actuator senses an impending valve jam, the electronic torque limiter is activated and on activation, repeatedly flashes the LED on and off.



Quick guide to the **J3** electric actuator standard features :

Highly visible LED light gives continuous actuator status indication.

J3 L - 12-24V AC/DC

J3 H - 80-240V AC/DC

Multi-voltage capable with auto-voltage sensing:

Torque output: range:
25~95Nm Break
20~80Nm Reset

Electronic torque limiter
Protects against valve jams

Anti-condensation heater

Manual override

All connections via external DIN plugs ~ no need to remove cover to connect

Volt free end of travel confirmation switches

IP65 weatherproof housing

CE marked

Traceable sequential serial numbering system

Optional failsafe kit (Battery Back-up) - actuator fails to safe position on power failure

Optional modulating kit with digital positioning system, either 0-10V or 4-20mA



Model **J3-1110E**

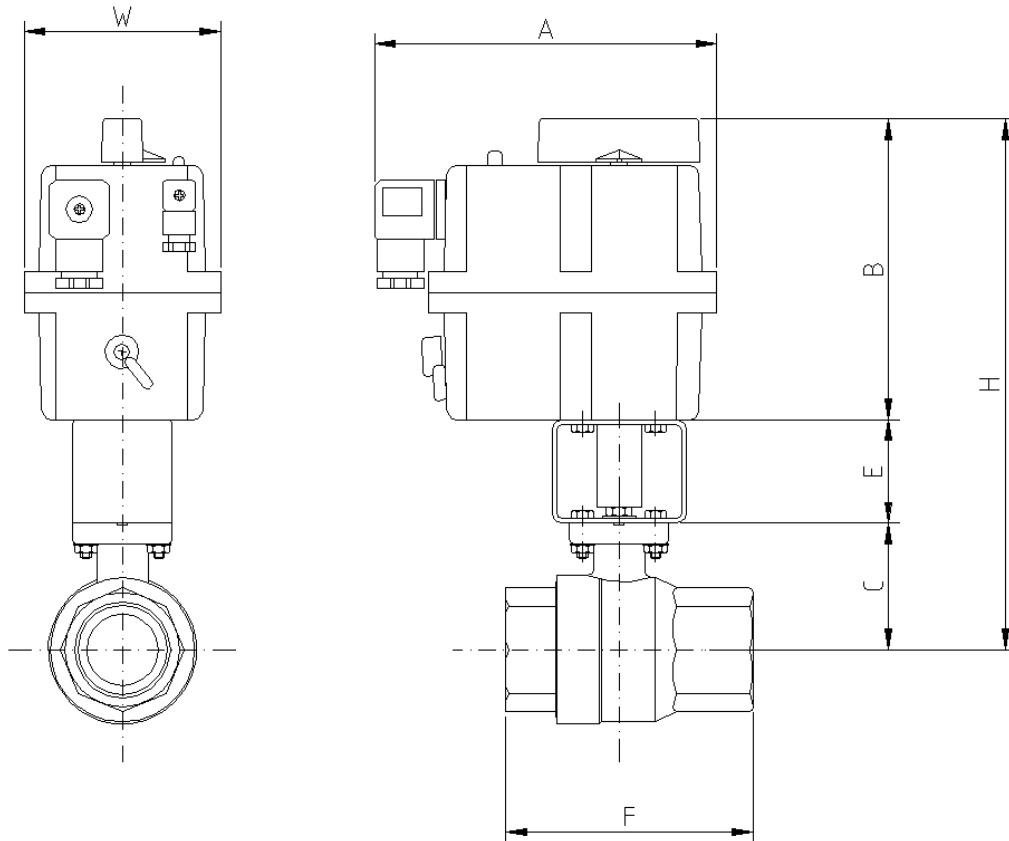
DIMENSIONS



Doc: J3/1110E/03

May 2010

Electrically operated 2 way brass ball valve with kit - Dimensions (to nearest mm)



Dimensions remain unchanged for all versions (on-off, failsafe & modulating)

	Model	A	B	C	E	F	H	W	Kilos	Kv
1/4"	20	177	149	29	50	65	228	110	2.1	16.3
3/8"	20	177	149	29	50	65	228	110	2.1	16.3
1/2"	20	177	149	29	50	65	228	110	2.1	16.3
3/4"	20	177	149	32	50	75	231	110	2.1	29.5
1"	20	177	149	36	50	86	235	110	2.4	43.0
1 1/4"	20	177	149	41	50	95	240	110	2.8	89.0
1 1/2"	20	177	149	57	50	101	256	110	3.4	230.0
2"	20	177	149	64	50	121	263	110	4.4	265.0
2 1/2"	35	177	171	90	50	165	270	110	6.0	540.0
3"	35	177	171	100	50	188	321	110	8.1	873.0

Kv is in m³/hr, based on water at ambient temperature with a 1 bar pressure drop across the valve

Subject to alteration without notice. Uncontrolled copy, not subject to automatic updates