



Model 1311/ 1312



Doc: CH-1310/01

Nov 2007

Air operated 3 way brass ball valve with kit

Full bore 3 way nickel plated brass BSP ball valve, designed for automation with integrally cast ISO5211 actuator mounting platform allowing direct mounting of actuators, fitted via stainless steel mounting kit with CH-air 'A' type pneumatic actuator. Supplied assembled and dry bench function tested. Minimum of 80 psi (5.5 bar) air supply pressure to the actuator is required.

1311 With double acting actuator

1312 With spring return actuator

Size range 1/4" to 2" in both 'L' and 'T' port.

Applications:

Water, oil, air and most non-corrosive media, subject to compatibility with wetted parts in contact with media. Actuators sized on a maximum differential pressure of 10 bar wet service, if the intended duty is above this differential, or dry (air or gas) call to check actuator sizing as a larger output actuator may be required. NOT recommended for use on steam.

Maximum working temperature of valve & actuator assembly is +130C. If the intended duty is at a higher temperature than this, select a stainless steel valve -contact us for information.

Valve Specifications:

Body	Nickel plated brass
Ball	Hard chromed brass
Seats	PTFE
Pressure rating	UTI 3/4" 30bar, 1" 16bar,rest 10bar
Valve temp limits	-20 to +160°C
Actuator temp limits	-20 to + 70°C

Accessories:

Solenoid control:

This provides electrical control of the valve. The air is constantly supplied to the solenoid which in turn controls the air to and from the actuator. The solenoid direct mounts to the actuator using the actuator's Namur connection.

Position Confirmation:

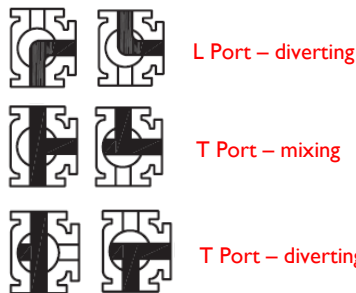
Remote end of travel confirmation can be provided by adding a top mounted limit switch box. A variety of switch options and housings are available. See our LSB range for details.

Position control:

The standard on/ off function can be converted to modulating function, using either a 3-15psi or 4-20mA control signal, by adding a pneumatic or electro-pneumatic positioner. See our YT range for details.



3 Way ball valves –flow patterns:



Quick guide to the CH-air A Type actuator standard features :

Robust rack and pinion construction

High accuracy machining of components

ATEX Ex II 2 GD approved for use in hazardous areas

CE Approved

Guaranteed for 1,000,000 cycles

Balanced air & spring strokes in spring return version

Safe to dismantle for routine maintenance

Compliant with all actuator standards

Accessories are easy to mount

Hard anodised aluminium body

ENP coated option (Extra cost)

Teflon® coated option (Extra cost)

Stainless steel version (Extra cost)



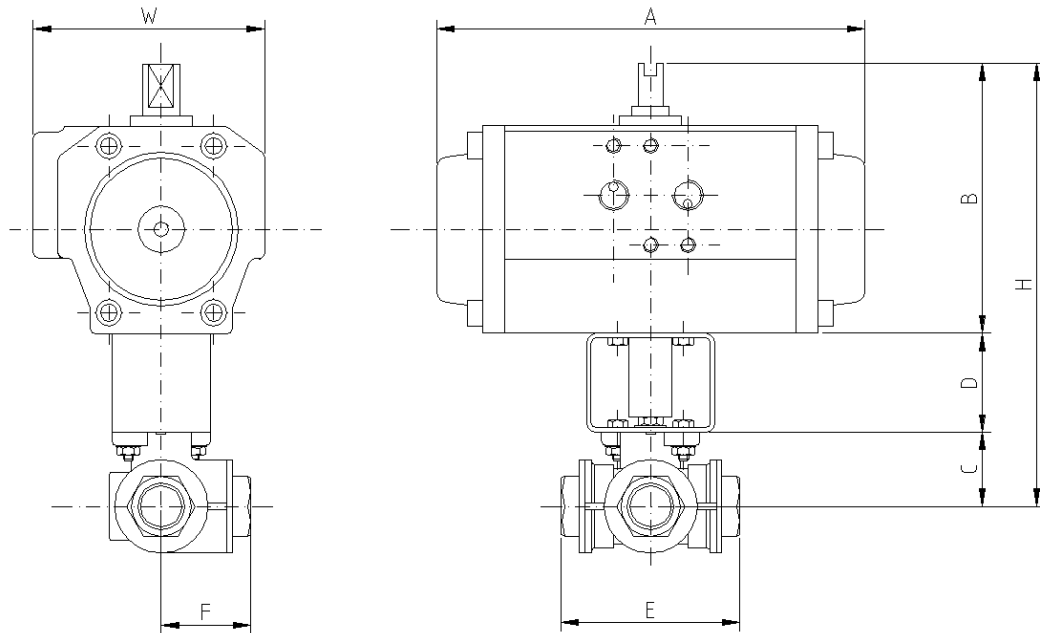
Model I311/I312



Doc: CH-I311/02

Nov 2007

Air operated 3 way brass ball valve with kit - Dimensions (to nearest mm)



Double Acting

	Model	A	B	C	D	E	F	H	W	Kilos	Kv	PN
1/4"	CH032	117	65	31	50	67	34	146	48	1.4	2.8	30
3/8"	CH032	117	65	31	50	67	34	146	48	1.4	3.0	30
1/2"	CH032	117	65	33	50	77	39	149	48	1.5	3.9	30
3/4"	CH063	156	103	42	50	87	44	199	86	3.1	7.9	30
1"	CH063	156	103	47	50	105	53	200	86	3.8	13.0	16
1 1/4"	CH063	156	103	60	50	123	61	213	86	4.8	20.7	10
1 1/2"	CH075	210	120	74	50	139	69	264	94	8.5	38.7	10
2"	CH075	210	120	85	50	166	83	275	94	12.3	54.0	10

Spring Return

1/4"	CH050SR	138	87	31	50	67	34	168	75	2.2	2.8	30
3/8"	CH050SR	138	87	31	50	67	34	168	75	2.2	3.0	30
1/2"	CH050SR	138	87	33	50	77	39	170	75	2.3	3.9	30
3/4"	CH075SR	210	120	42	50	87	44	212	94	4.9	7.9	30
1"	CH075SR	210	120	47	50	105	53	217	94	5.6	13.0	16
1 1/4"	CH075SR	210	120	60	50	123	61	230	94	6.5	20.7	10
1 1/2"	CH085SR	228	130	74	50	139	69	174	104	10.5	38.7	10
2"	CH085SR	228	130	85	50	166	83	285	104	14.2	54.0	10

Kv is in m³/hr, based on water at ambient temperature with a 1 bar pressure drop across the valve

Subject to alteration without notice. Uncontrolled copy, not subject to automatic updates



Valve Data Sheet



Doc: BBV3W/02

Nov 2007

Full bore nickel plated 3 way brass direct mount ball valve



3 Way ball valves – flow patterns:



L Port – diverting



T Port – mixing



T Port – diverting

Specifications:

Construction	3 Way full bore direct mount ball valve
Size Range (Full)	1/4" to 2" BSP
Pressure Rating	30 Bar 1/4" - 3/4", 16 Bar 1", rest 10 Bar
Valve Body Material	OT58 Nickel plated brass
Trim Material	OT58 Chrome plated brass
Seat Material	4 x PTFE
Seal Material (Options)	Viton
Inspection & Test	Manufacturer's own
Standards	ISO5211, DIN3337
Certification	Certificate of Conformity
Temperature Range	-20 to +160C

Approvals:

Approved ?



PED/97/23/EC



ATEX 94/9/EC
II 2 GD



API 607 4th Ed'n /
BS6755 Pt 2



TA-Luft



Dimensions:

SIZE DN	BORE	n	R	h	L	m	ISO5211
1/4"	8	9	120	63	67	34	F03
3/8"	10	9	120	63	67	34	F03
1/2"	15	9	120	64	77	39	F03
3/4"	20	11	170	75	87	44	F05
1"	25	11	170	80	105	53	F05
1 1/4"	32	11	170	93	123	61	F05
1 1/2"	40	14	230	114	139	70	F07
2"	50	14	230	124	166	83	F07

