



# Model 2311/2312



Doc: CH-2311/02

Nov 2007

## Air operated 3 way stainless steel ball valve with kit

Reduced bore 3 way BSP stainless steel ball valve, designed for automation with integrally cast ISO5211 actuator mounting platform, fitted via stainless steel mounting kit with CH-air 'A' type pneumatic actuator. Supplied assembled and dry bench function tested. Minimum of 80 psi (5.5 bar) air supply pressure to the actuator is required.

2311 With double acting actuator

2312 With spring return actuator

Size range from 1/2" to 2".

Available in 'L' or 'T' port configuration.

### Applications:

Water, oil, air and most non-corrosive media, subject to compatibility with wetted parts in contact with media. Actuators sized on a maximum differential pressure of 10 bar wet service, if the intended duty is above this differential, or dry (air or gas) call to check actuator sizing as a larger output actuator may be required.

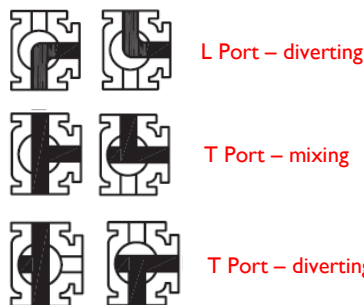
Maximum working temperature of valve & actuator assembly is +130C. If the intended duty is at a higher temperature than this, contact us for options.

### Valve Specifications:

Body	CF8M Cast 316SS
Ball	CF8M Cast 316SS
Seats	PTFE
Pressure rating	64 bar
Valve temp limits	-40 to +200°C
Actuator temp limits	-20 to +70°C



### 3 Way ball valves –flow patterns:



### Accessories:

Solenoid control:

This provides electrical control of the valve. The air is constantly supplied to the solenoid which in turn controls the air to and from the actuator. The solenoid direct mounts to the actuator using the actuator's Namur connection.

Position Confirmation:

Remote end of travel confirmation can be provided by adding a top mounted limit switch box. A variety of switch options and housings are available. See our LSB range for details.

Position control:

The standard on/ off function can be converted to modulating function, using either a 3-15psi or 4-20mA control signal, by adding a pneumatic or electro-pneumatic positioner. See our YT range for details.

### Quick guide to the CH-air A Type actuator standard features :

*Robust rack and pinion construction*

*High accuracy machining of components*

*ATEX Ex II 2 GD approved for use in hazardous areas*

*CE Approved*

*Guaranteed for 1,000,000 cycles*

*Balanced air & spring strokes in spring return version*

*Safe to dismantle for routine maintenance*

*Compliant with all actuator standards*

*Accessories are easy to mount*

*Hard anodised aluminium body*

*ENP coated option (Extra cost)*

*Teflon® coated option (Extra cost)*

*Stainless steel version (Extra cost)*



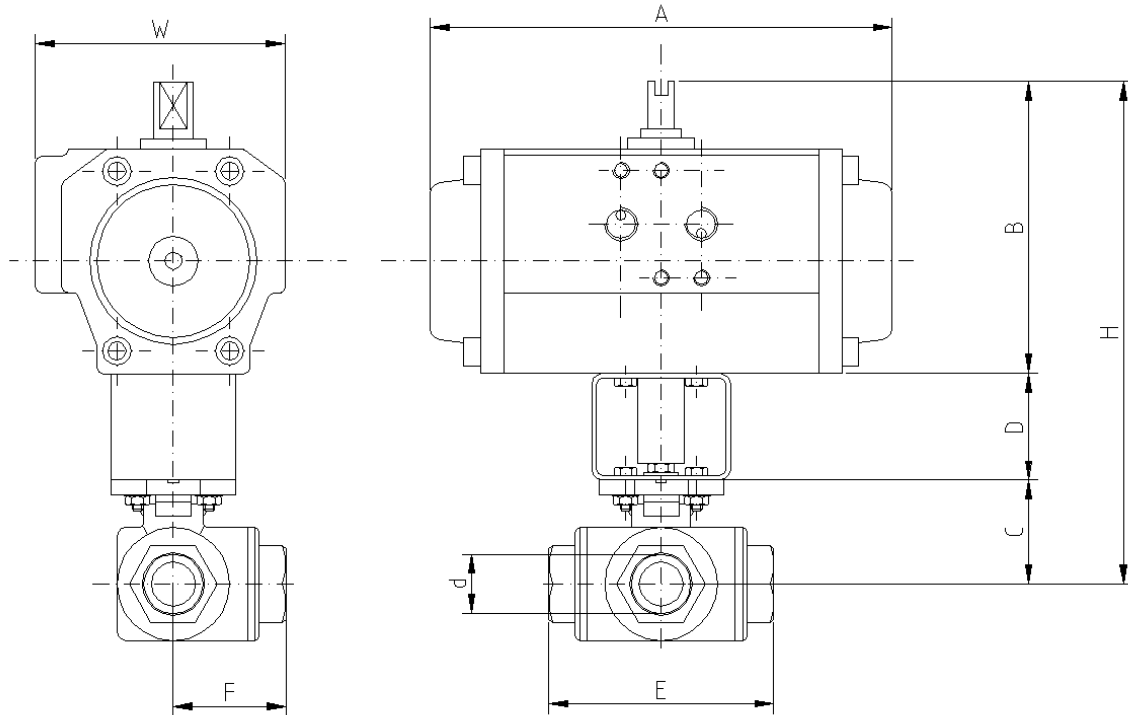
# Model 2311/2312



Doc: CH-2311/01

Nov 2006

## Air operated 3 way stainless steel ball valve with kit - Dimensions (to nearest mm)



Double Acting											
	Model	A	B	C	D	E	F	H	W	Kilos	Bore 'd'
1/4"	CH042	160	77	39	50	72	36	166	61	1.3	11
3/8"	CH042	160	77	39	50	72	36	166	61	1.3	11
1/2"	CH042	160	77	41	50	83	42	168	61	1.5	12
3/4"	CH050	160	77	49	50	99	50	176	75	2.4	15
1"	CH050	138	87	55	50	112	56	192	75	3.3	20
1 1/4"	CH063	156	103	63	50	125	63	206	86	4.9	25
1 1/2"	CH075	210	120	74	50	149	75	244	94	7.5	32
2"	CH075	210	120	93	50	174	87	263	94	12.5	38
Spring Return											
1/4"	CH063SR	156	103	39	50	72	36	192	86	1.8	11
3/8"	CH063SR	156	103	39	50	72	36	192	86	1.8	11
1/2"	CH063SR	156	103	41	50	83	42	194	86	2.3	12
3/4"	CH063SR	156	103	49	50	99	50	202	86	3.3	15
1"	CH063SR	156	103	55	50	112	56	208	86	4.1	20
1 1/4"	CH075SR	210	120	63	50	125	63	233	94	6.6	25
1 1/2"	CH100SR	281	145	74	50	149	75	269	120	10.5	32
2"	CH100SR	281	145	93	50	174	87	288	120	16.6	38