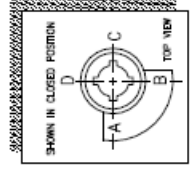


Suitable for 090 serie insert

DESCRIPTION
 Travel : 90° ±5° At both ends.
 Ratio : 43 : 1
 Turns to close : 10.75
 Weight : 21 kg.(46.2 lb.) Excl.handles

MOUNTINGHOLES
 Valve connection : F10/F12/F14
 Max. Bore : ϕ 34 [1.33] or ϕ 40 [1.57]
 Act. connection : F10/F12/F14
 Act. Bore : ϕ 48 [1.89] or ϕ 68 [2.67]

TORQUE
 max.OUTPUT : 1450 Nm (12832 lbf.ft.)
 max.INPUT : 125 Nm (1105 lbf.ft.)
 M.A. : 11.6 ±10%



GEARBOX ILG/D 900

