

## Declutchable sandwich gearbox for double acting pneumatic actuators Type: ILD/G

The ILG/D gearbox is a declutchable unit that sandwich mounts between the valve and double acting actuator to provides a safe manual override facility.

Operating the declutching facility disengages the actuator drive and allows the valve to be rotated using the gearbox hand wheel.

The ILG/D worm gear operator features a stainless steel input shaft, an axial needle bearing, a cast iron housing, a coated steel hand wheel, and is IP65 weatherproof.

### Materials:

Body	Cast iron
Cover	Cast iron
Shaft	Stainless
Protection	IP65
Connections	ISO:5211
Hand wheel	Coated steel



### Specifications:

Model >	ILG/D 232/10	ILG/D 550	ILG/D 900	ILG/D 1500	ILG/D 2400	ILG/D 5000
Details ↓						
Max output torque Nm	250	500	1450	2485	3390	7450
Max input torque Nm	25	45	125	160	188	266
Valve connection ISO:5211	F07, F10, F12	F07, F10, F12, F14	F10, F12, F14	F10, F12, F14, F16	F12, F14, F16	F16, F25
Actuator connection ISO:5211	F07	F07, F10, F12	F10, F12, F14	F12, F14, F16	F14, F16	F16, F25
Max valve stem size (sq)	27	27	48	52	46	65
Max actuator drive square	24	27	32	36	62	55
Number of turns to close	9.25	14	10.75	14.25	17	26
Ratio	45:1	56:1	43:1	57:1	68:1	104:1
Weight (kg)	2	11	21	34	54	80

Dimensions available on request

### Fits the CH-air A Type Pneumatic actuator ~ Actuator features :

*Robust rack and pinion construction*

*High accuracy machining of components*

*ATEX Ex II 2 GD approved for use in hazardous areas*

*CE Approved*

*Guaranteed for 1,000,000 cycles*

*Balanced air & spring strokes in spring return version*

*Safe to dismantle for routine maintenance*

*Compliant with all actuator standards*

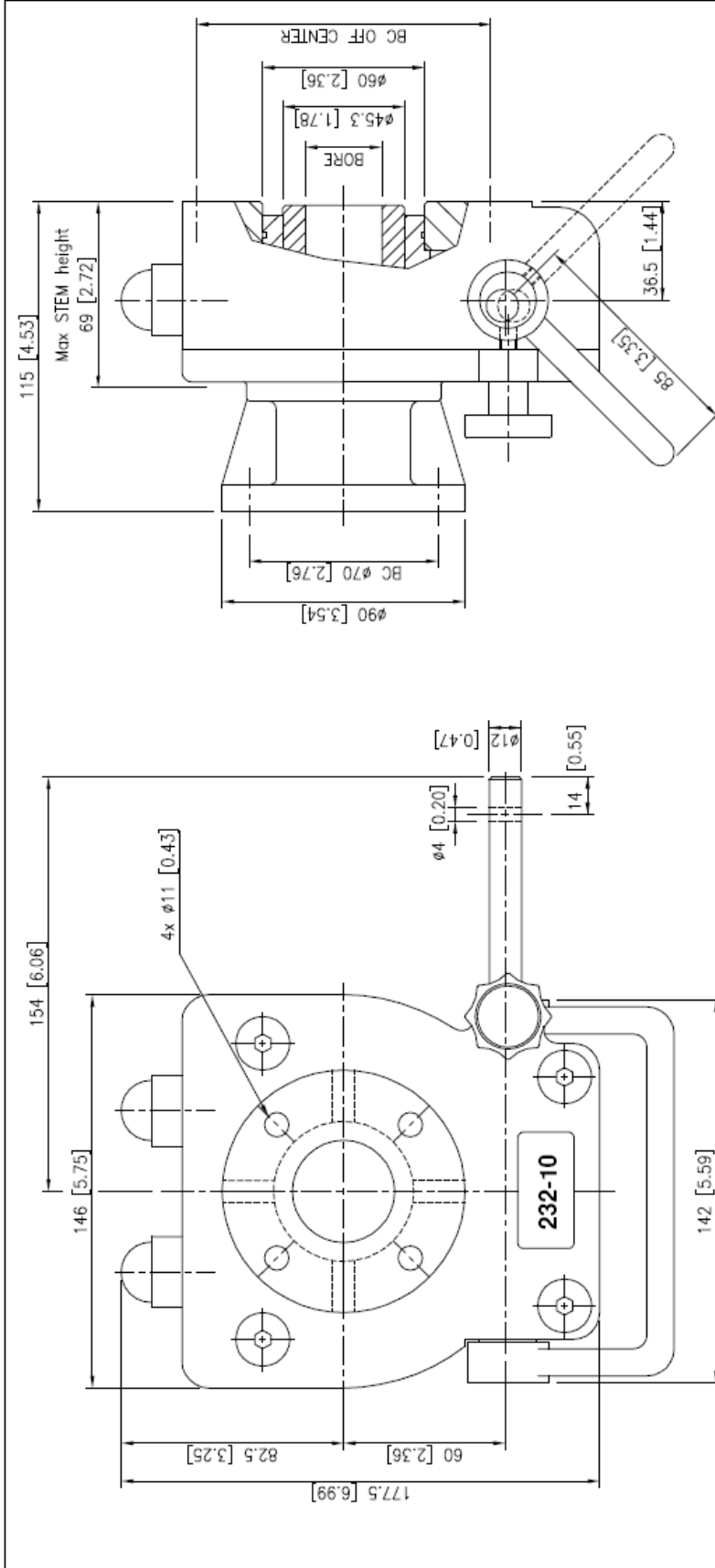
*Accessories are easy to mount*

*Hard anodised aluminium body*

*ENP coated option  
(Extra cost)*

*Teflon® coated option  
(Extra cost)*

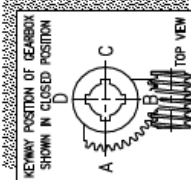
*Stainless steel version  
(Extra cost)*



**DESCRIPTION**  
 TRAVEL : 90° ±5° AT BOTH ENDS.  
 RATIO : 45 : 1  
 TURNS TO CLOSE : 9,25  
 WEIGHT : 2 kg.(4.4 lb.) excl.handwheel

**MOUNTINGHOLES**  
 Valve connection : F07/F10/F12  
 MAX. bore :  $\phi$  24 [0.94] or  $\phi$ 30 [1.18]  
 Actuator connection : F07  
 MAX. shaft :  $\phi$  30 [1.18] or  $\phi$ 38 [1.49]

**TORQUE**  
 max.OUTPUT : 250 Nm (2210 lbf.in.)  
 max.INPUT : 25 Nm (220 lbf.in.)  
 M.A. : 10 ±10%

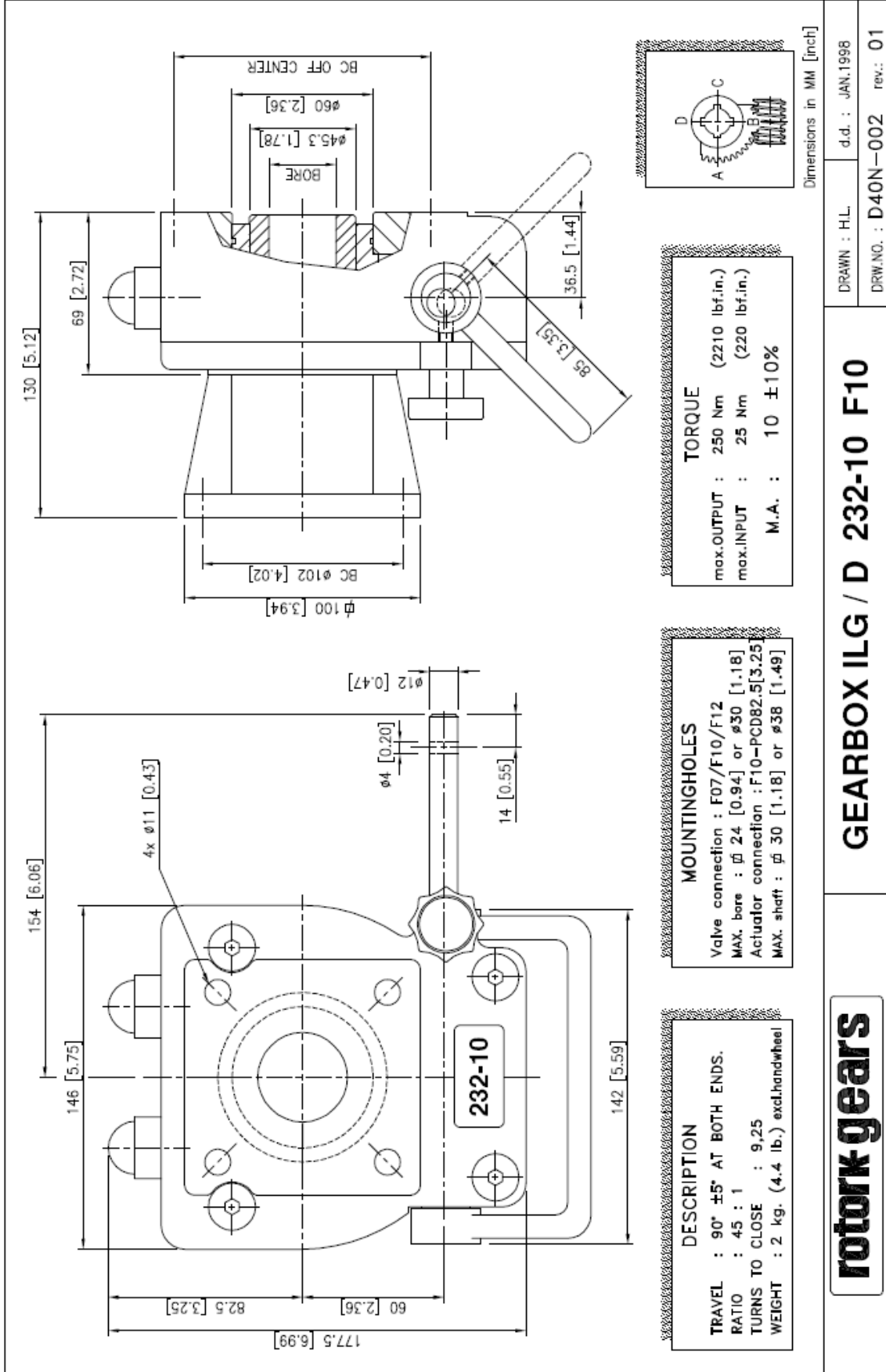


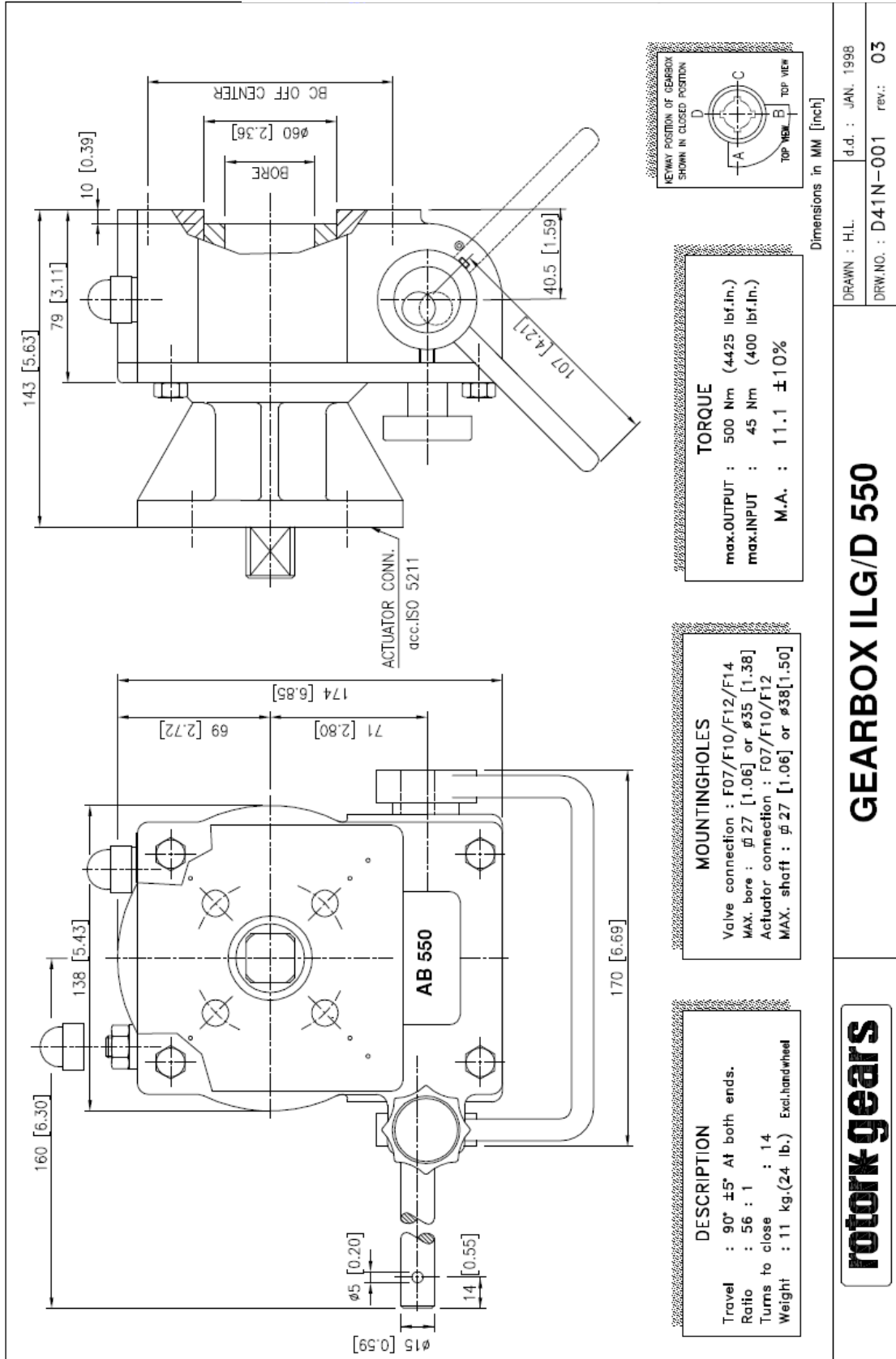
Dimensions in MM [inch]

DRAWN : H.L  
 d.d. : JAN. 1998  
 DRW.NO. : D40N-001 rev: 03

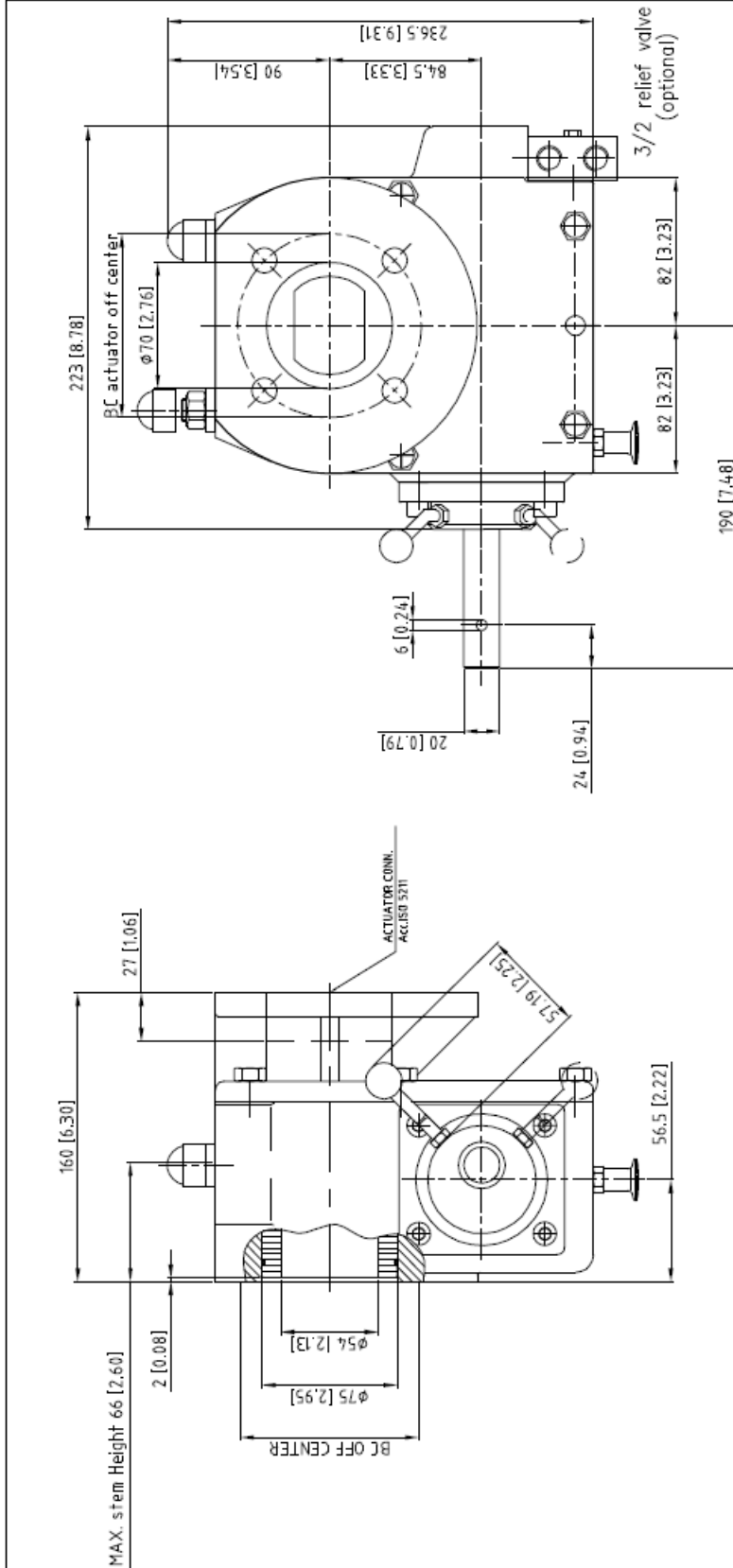
**GEARBOX ILG/D 232-10 F07**

**rotonk-gears**





## GEARBOX ILG/D 550

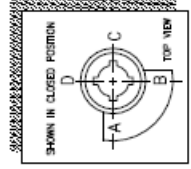


Suitable for 090 serie insert

**DESCRIPTION**  
 Travel : 90° ±5° At both ends.  
 Ratio : 43 : 1  
 Turns to close : 10.75  
 Weight : 21 kg.(46.2 lb.) Excl.hardened

**MOUNTINGHOLES**  
 Valve connection : F10/F12/F14  
 Max. Bore : Ø 34 [1.33] or Ø40 [1.57]  
 Act. connection : F10/F12/F14  
 Act. Bore : Ø 48 [1.89] or Ø68 [2.67]

**TORQUE**  
 max.OUTPUT : 1450 Nm (12832 lbf.ft.)  
 max.INPUT : 125 Nm (1105 lbf.ft.)  
 M.A. : 11.6 ±10%

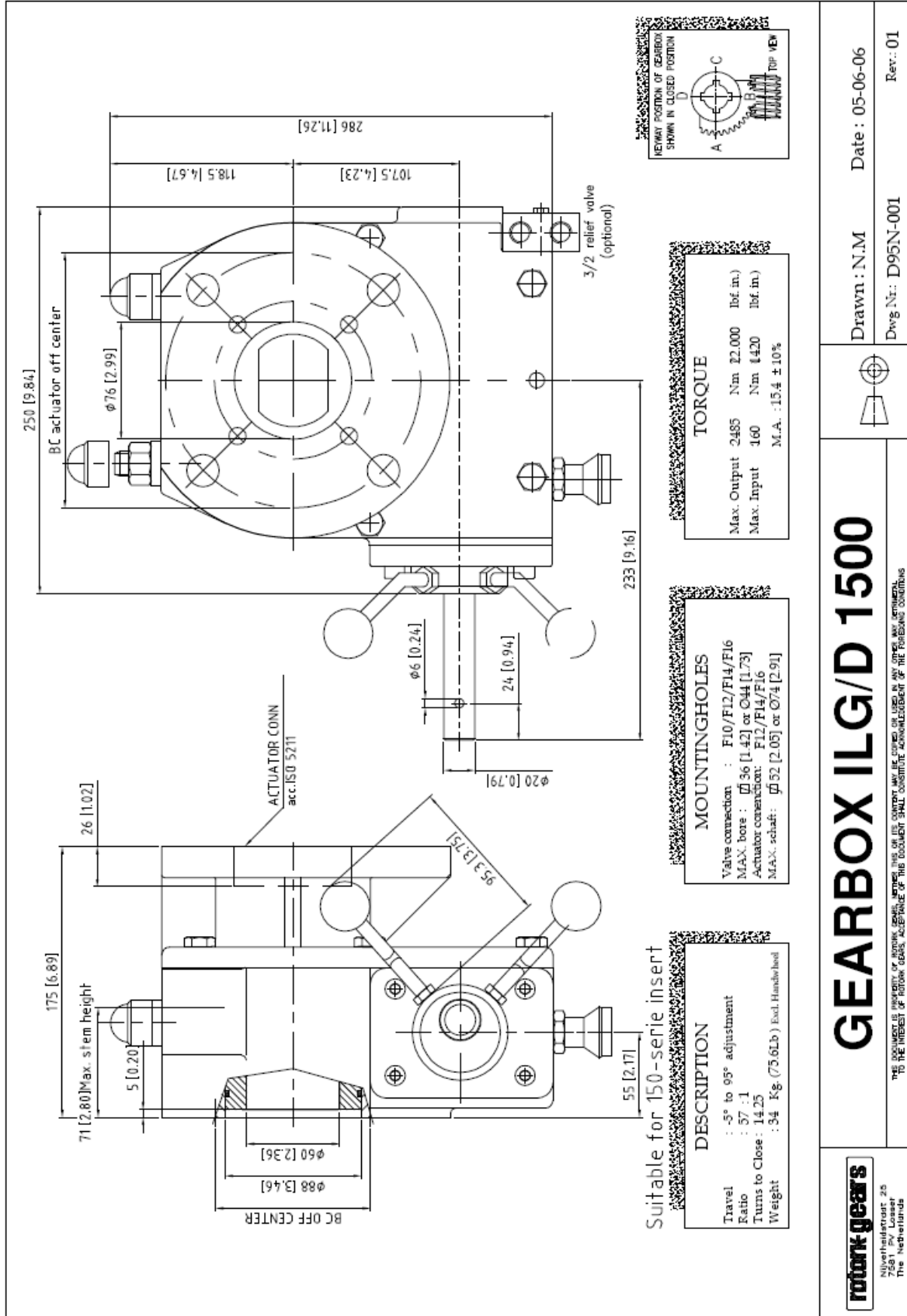


**rotork-gears**  
 Nijverheidsweg 25  
 5505 BA Giesbeek  
 The Netherlands

## GEARBOX ILG/D 900

Drawn : N.M  
 Date : 24-03-2006  
 Dwg. Nr.: D94N-001  
 Rev.: 02

Contents Subject to change without notice.



**DESCRIPTION**

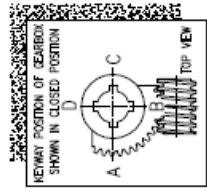
Travel : -5° to 95° adjustment  
 Ratio : 57 : 1  
 Turns to Close : 14.25  
 Weight : 34 Kg (75.6Lb ) Excl. Handle tool

**MOUNTINGHOLES**

Valve connection : F10/F12/F14/F16  
 MAX. bore :  $\phi 36$  [1.42] or  $\phi 44$  [1.73]  
 Actuator connection: F12/F14/F16  
 MAX. schaft :  $\phi 52$  [2.05] or  $\phi 74$  [2.91]

**TORQUE**

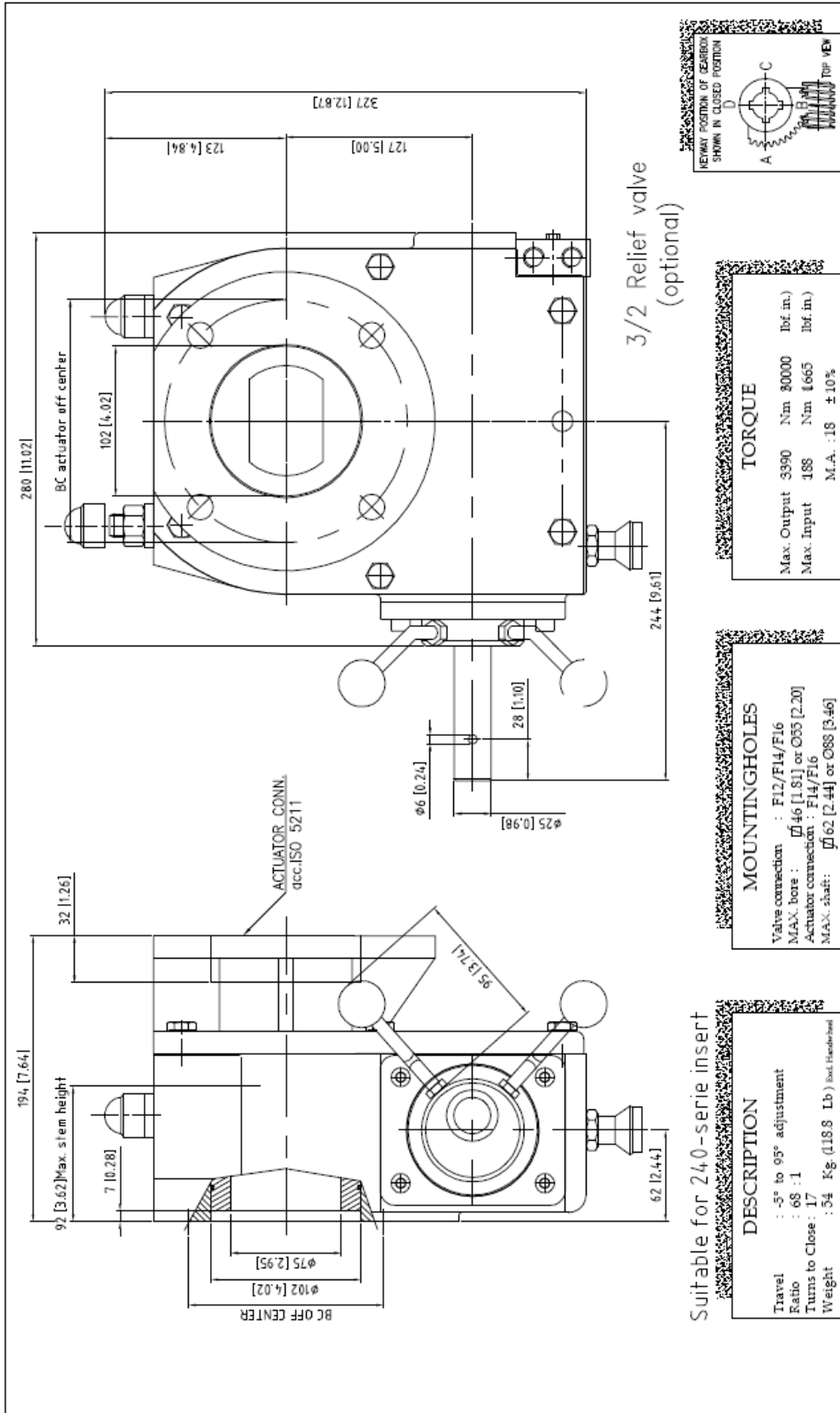
Max. Output 2485 Nm (22,000 lbf.in.)  
 Max. Input 360 Nm (420 lbf.in.)  
 M.A. : 15.4 ± 10%



Suitable for 150-series insert

Drawn : N.M Date : 05-06-06  
 Dwg Nr.: D95N-001 Rev.: 01  
 Contents Subject to change without notice.

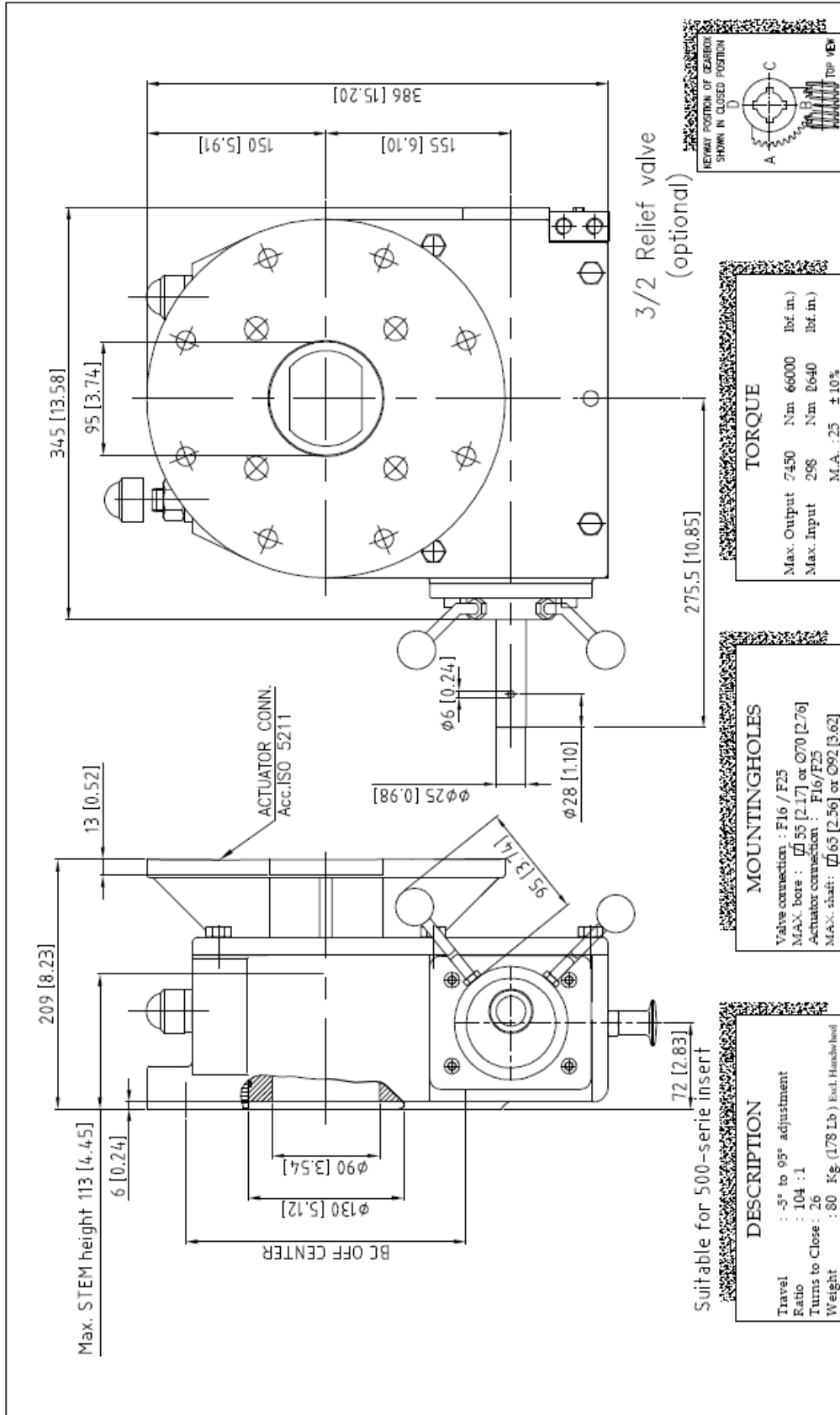
## GEARBOX ILG/D 1500



Suit able for 240-series insert

<p>Nijverheidsweg 25 7581 PV Loosdrecht The Netherlands</p>		Drawn : N.M Date : 05-06-06 Dwg Nr. : D96N-001 Rev. : 02
		Gearbox ILG/D 2400

Contents subject to change without notice.



<p>Nijverheidstraat 25 7561 PV Loosdrecht The Netherlands</p>		Drawn : N.M Dwg.Nr. : D97N-001	Date : 05-06-06 Rev. : 03
		<p><b>GEARBOX ILG/D 5000</b></p>	

Consent Subject to change without notice.

THIS DOCUMENT IS PROPERTY OF ROTORK GEARBOX. IT IS TO BE USED ONLY FOR THE PURPOSES FOR WHICH IT WAS SUPPLIED. ANY OTHER USE IS STRICTLY PROHIBITED. ACCEPTANCE OF THIS DOCUMENT SHALL CONSTITUTE ACKNOWLEDGMENT OF THE FOREGOING CONDITIONS.