



Model HQ-1313



Doc: HQ/1313/01

Nov 2009

IP67 Electrically operated 3 way brass ball valve with kit

Full bore 3 way nickel plated brass ball valve, designed for automation with integrally cast ISO5211 actuator mounting platform fitted via a stainless steel mounting kit with HQ-04 electric actuator. Supplied assembled and dry bench function tested. Full size range from 1/4" to 2".

Available in both 'L' and 'T' port.



Type	Power supply & function
HQ-1313-240	220/1ph/50Hz (or 60Hz) On-off
HQ-1313-110	110/1ph/50Hz (or 60Hz) On-off
HQ-1313-24AC	24/1ph/50Hz (or 60Hz) On-off
HQ-1313-24VDC	24VDC On-off

For failsafe or modulating applications see the Type: J3-1310

Applications:

Water, oil, air and most non-corrosive media, subject to compatibility with wetted parts in contact with media. Actuators sized on a maximum differential pressure of 10 bar wet service, if the intended duty is above this differential, or dry (air or gas) call to check actuator sizing as a larger output actuator may be required. NOT recommended for use on steam.

Maximum working temperature of valve & actuator assembly is +120C. If the intended duty is at a higher temperature than this, select a stainless steel valve -contact us for information.

Valve Specifications:

Body	Nickel plated forged brass
Ball	Chrome plated brass
Seats & seals	PTFE
Pressure rating	UTI 3/4" 30 bar, rest 10 bar
Valve temp limits	-20 to +120°C
Actuator temp limits	-20 to + 70°C



3 Way ball valves – flow patterns:



L Port – diverting



T Port – mixing



T Port – diverting

Quick guide to the HQ-04 electric actuator standard features :

IP67 Weatherproof housing.
(Can be submerged for a maximum of 30 minutes under a maximum of 1m of water.)

Torque output Max 40Nm

Available supply voltages:

220V AC / 1ph

110V AC / 1ph

24V AC / 1ph

24V DC

Anti-condensation heater

Manual override facility

2 End of travel SPDT switches

2 x M20 Conduit cable entries

Terminal strip inside

-20 to +70C Ambient temperature range

Duty cycle S2 = 35%

Working time 14 secs (50 Hz)

Weight 3kgs

Dry powder polyester coated aluminium housing.

Serial numbered





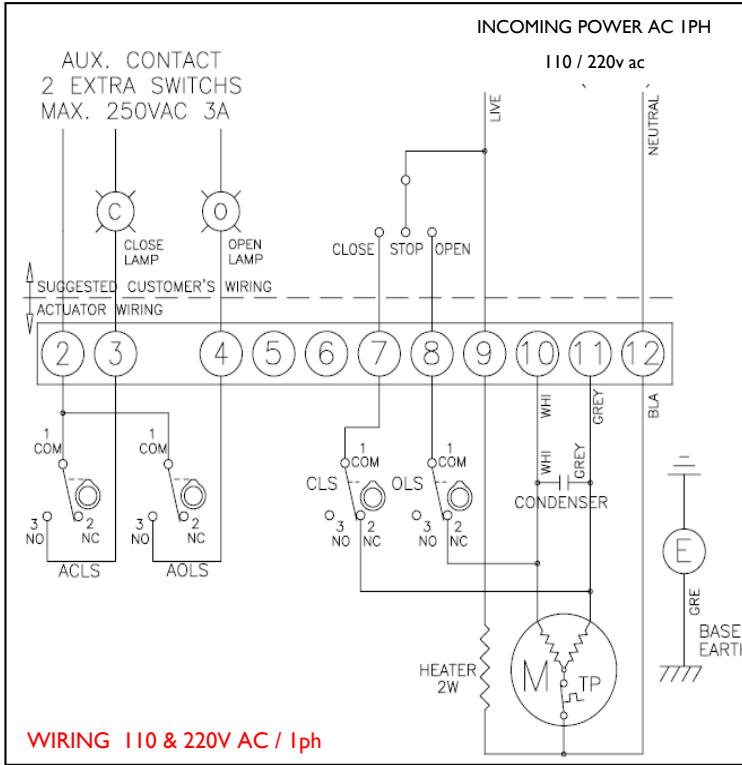
Model HQ-1313

WIRING DIAGRAMS



Doc: HQ/1313/01

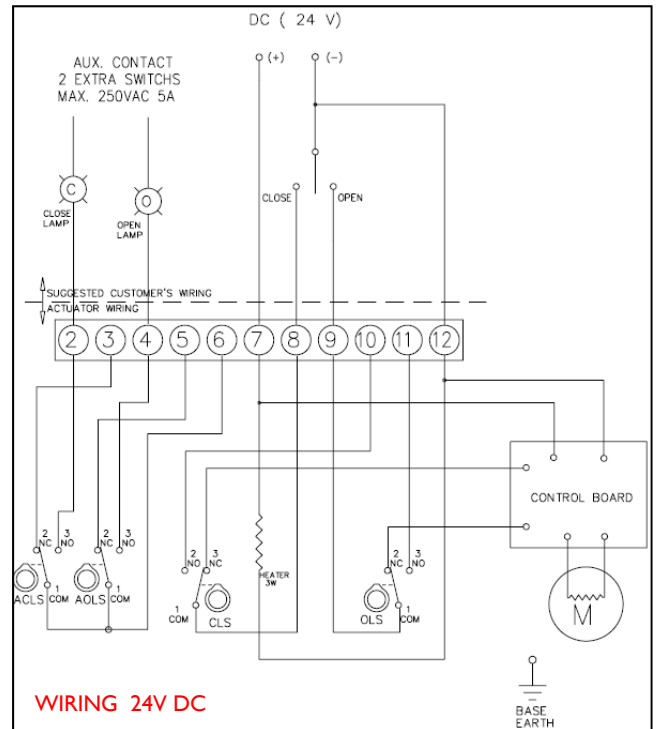
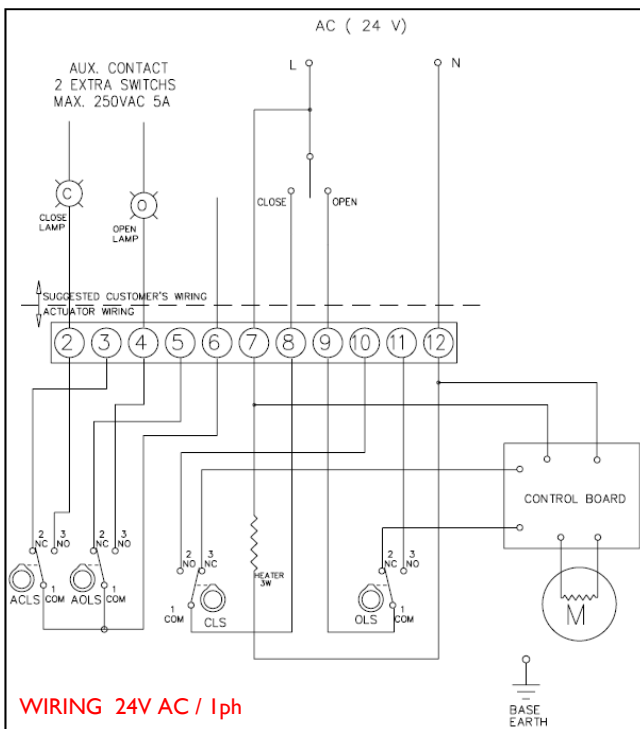
Nov 2009



SYMBOL	DESCRIPTION	RATING
CLS	CLOSE MOTOR STOP SWITCH	250VAC 5A
OLS	OPEN MOTOR STOP SWITCH	250VAC 5A
ACLS	AUX CLOSE LIMIT SWITCH	250VAC 5A
AOLS	AUX OPEN LIMIT SWITCH	250VAC 5A
TP	THERMAL PROTECTOR	250VAC 15A

IMPORTANT NOTE:

Each actuator should be powered through its own individual switch or relay contacts to prevent cross feed





Model HQ-1313

DIMENSIONS

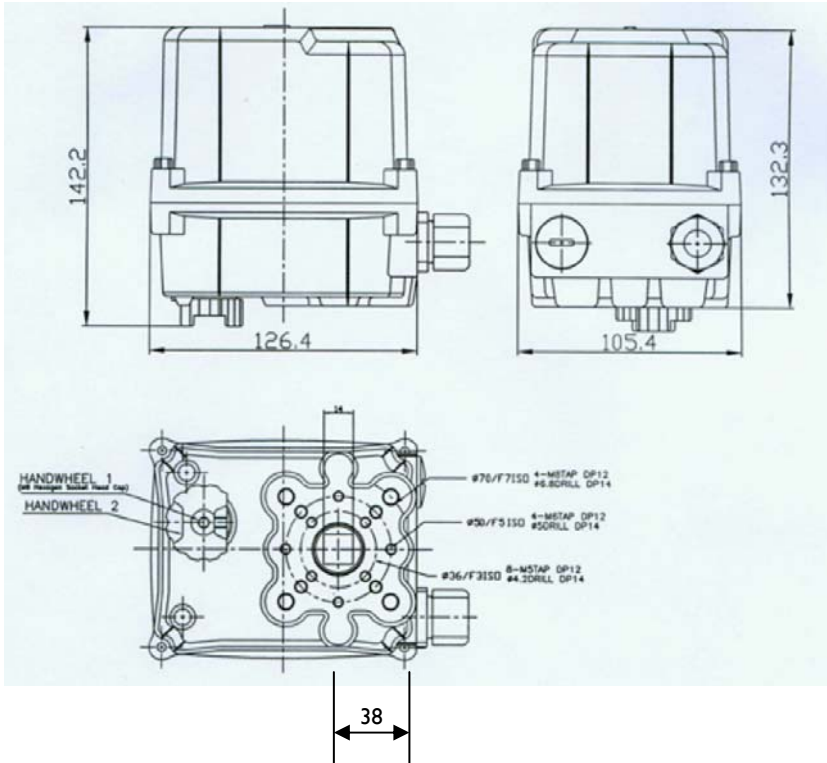


Doc: HQ/1313/01

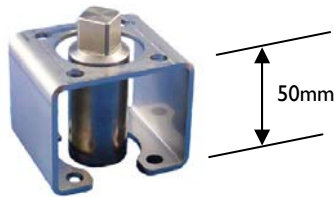
Nov 2009

IP67 Electrically operated 3 way brass ball valve - dimensions (mm)

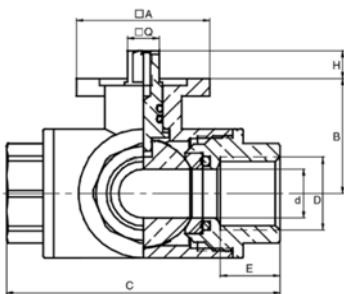
Actuator dimensions



Standard mounting kit dimensions



Valve dimensions



	1/4"	3/8"	1/2"	3/4"	1"	1 1/4"	1 1/2"	2"
D	10	14	19	24	30	38	48	
d	10	10	14	19	24	30	38	48
A	38 x 38	38 x 38	38 x 38	50 x 50	50 x 50	50 x 50	70 x 70	70 x 70
B	30	30	33	42	47	52	70	79.5
C	65	65	78	87	105	118	134	161
E	15	15	17	18	21	23.5	23.5	27.5
H	8	8	8	11	11	11	15	15
Q	9 x 9	9 x 9	9 x 9	11 x 11	11 x 11	11 x 11	14 x 14	14 x 14
Drilling	F03	F03	F03	F05	F05	F05	F07	F07